

FORM No. 1.

c86-17

Daniel Harman & other Land

Thomas Spencer

John Bowerman

N. 68. E. 90.

Stones

Let m & L s

N. 73. E. 20 1/2

Boak

Ch. oak

John Sawyers

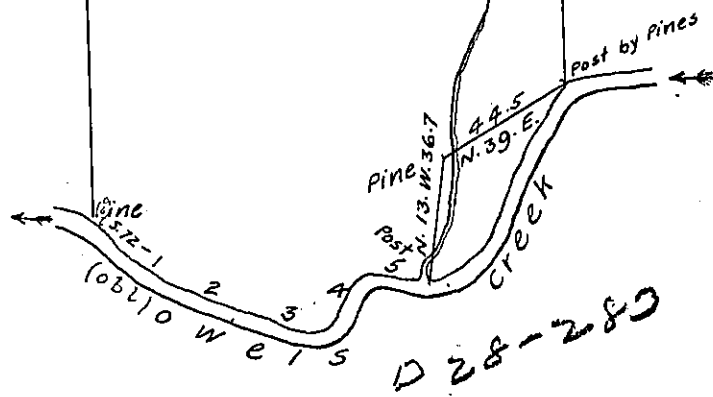
Robert McCleery

308 Acres, 46 perches & Allowance.

Courses & Distances up the Creek, Beg. at a Pine

- 1. S. 72. E. 31.
- 2. S. 87. E. 23.
- 3. N. 76 E. 31
- 4. N. 5 1/2 E. 15.2
- 5. N. 77. E. 20.

120.7



Surveyd August 17th 1814, for Andrew Shissley the above described tract of Land situate in Halifax Township, Dauphin County, containing three Hundred and eight Acres, and forty six perches and Allowance, by his Warrant of dated August 4th 1814.

Thomas Smith, D.S

To Richard T. Leech, Esqr. }
 Surveyor General Pa }

IN TESTIMONY that the above is a copy of the original remaining on file in the Department of Internal Affairs of Pennsylvania, made conformably to an Act of Assembly approved the 16th day of February 1833, I have hereunto set my hand and caused the Seal of said Department to be affixed at Harrisburg, this ninth day of January 1907.

Isaac B. Brown
 Secretary of Internal Affairs.